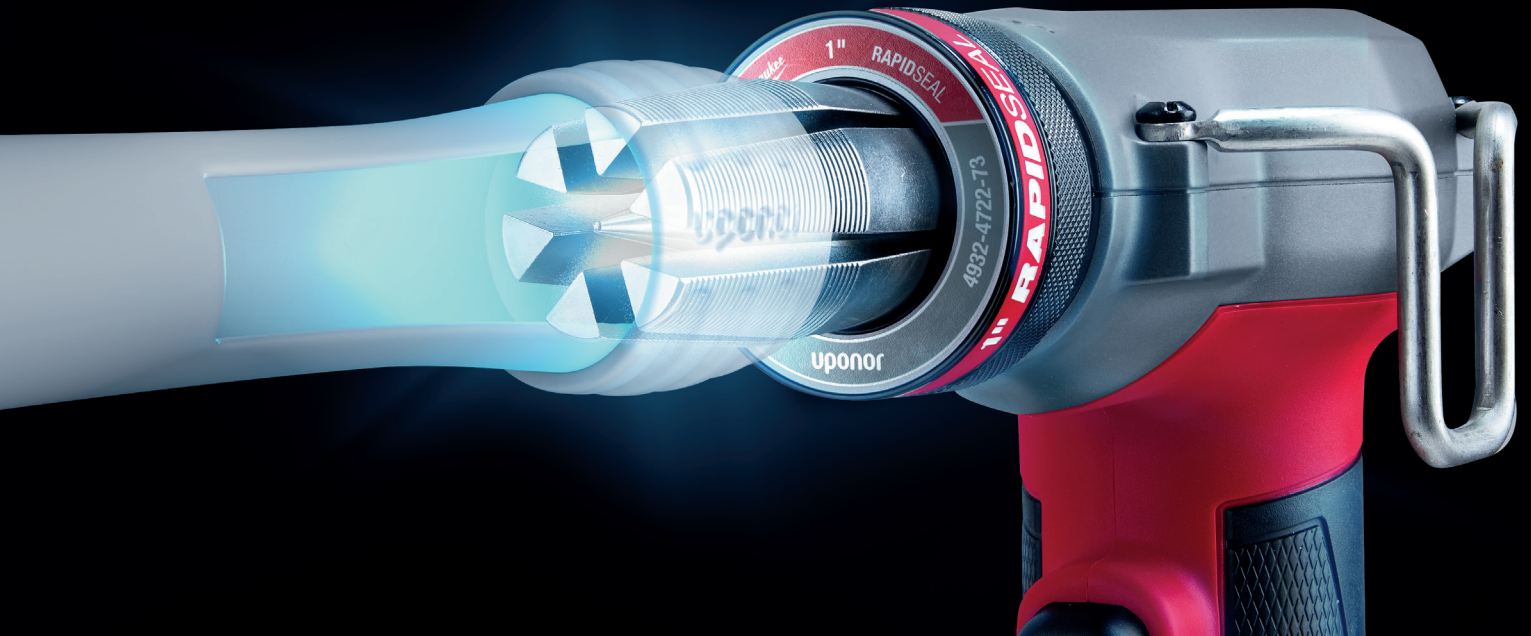


# Faster and more reliable installations. With less effort.

Uponor Q&E Rapid Seal Heads and  
Q&E expander tool M12 Fuel



For its PEX pipe, Uponor offers the unique Q&E (Quick & Easy) installation process, which already excels in speed, reliability and cost efficiency.

Nonetheless, Uponor has succeeded in making this installation technique even better. The company once again combined its plumbing knowledge and experience as the world's largest PEX producer with the expertise of Milwaukee, an industry-recognised manufacturer of portable power tools. Together, we developed a new set of Rapid Seal Heads and a new M12 Fuel expander.

The result is a system fit that offers a quicker Q&E installation process from expansion to sealing than has ever been possible before.

**Up to 20% more rapid expansion and up to 60% faster sealing connections. Drastically reduce the time to pressure test.**

## Benefits of Uponor PEX pipes, Q&E fittings and Q&E tools

**Connect in three steps – Fast. Simple. Secure.**



**1**  
Cut the pipe edge vertically.



**2**  
Expand the pipe end. To ensure an even increase, the expander revolves according to the integrated auto rotation function.



**3**  
Insert the expanded pipe end quickly until it stops on the fitting nipple. Hold until the pipe shrinks.  
**Done!**

**Uponor**

# Smart jointing. Better together.

Whether you are installing a drinking water, heating or cooling solution, only the combination of Uponor PEX pipes, Q&E fittings and Q&E tools offers a perfect installation experience because each component has been designed to fit together perfectly and form a reliable system.

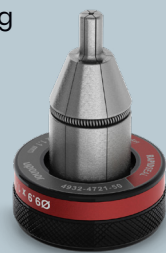
## NEW: Uponor Q&E expander tool M12 Fuel

- Redesigned tool with brushless motor for up to 20% faster expansion
- New lithium-ion batteries provide longer endurance, especially in colder temperatures
- Ergonomic design ensures excellent balance, even with one-hand operation
- Suitable for expanding Uponor PEX pipes up to a diameter of 32 mm



## NEW: Uponor Q&E Rapid Seal Heads

- Optimised design ensuring up to 60% faster sealing connection of Uponor PEX pipes on Q&E fitting even in cold temperatures
- Uniform expansion and pipe sealing without deviation in performance thanks to autorotation
- Reengineered heads available for pipe dimensions 9.9, 16, 20, 25 and 32 mm



## Uponor PEX pipe

- When expanded with the appropriate tool, Uponor PEX pipes use their memory effect to create a powerful joint by resuming their original shape



## Uponor Q&E fittings

- Full range of plastic and brass Q&E fittings ensure high flow rates and an intuitive installation process



### Uponor Corporation

Äyritie 20  
01510 Vantaa  
Finland

T +358 (0)20 129 211  
F +358 (0)20 129 2841  
www.uponor.com

1122232 - 10/2021 - EN

# Moving ➤ Forward